

Lifting/lowering valve type HSV

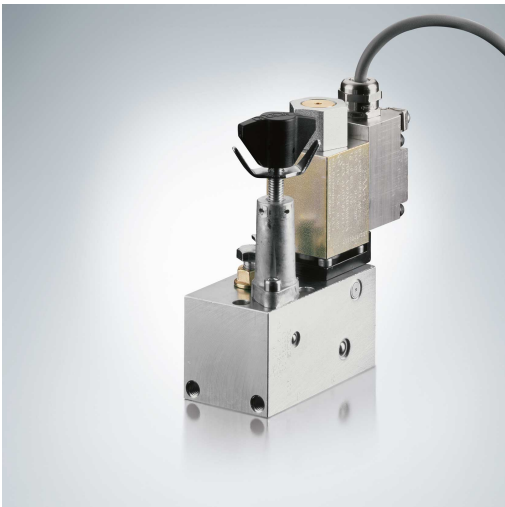
Lifting-lowering valves are a combination of directional valves and metering valves. The valve block type HSV provides the function of a 2/2-way directional seated valve with electrical actuation for lowering the load. Adjustable throttle valves or flow control valves independent of the load control the lowering speed. An integrated pressure-limiting valve limits the permissible load. The lifting/lowering valve type HSV is used to control lifting equipment with single-acting cylinders.

Features and benefits:

- Optimum control of lifting and lowering function
- High pressures up to 400 bar
- Zero leakage to prevent unwanted lowering of loads and platforms
- Integrated overpressure protection

Intended applications:

- Cranes and lifting equipment
- Materials handling
- Road vehicle
- Mining machinery

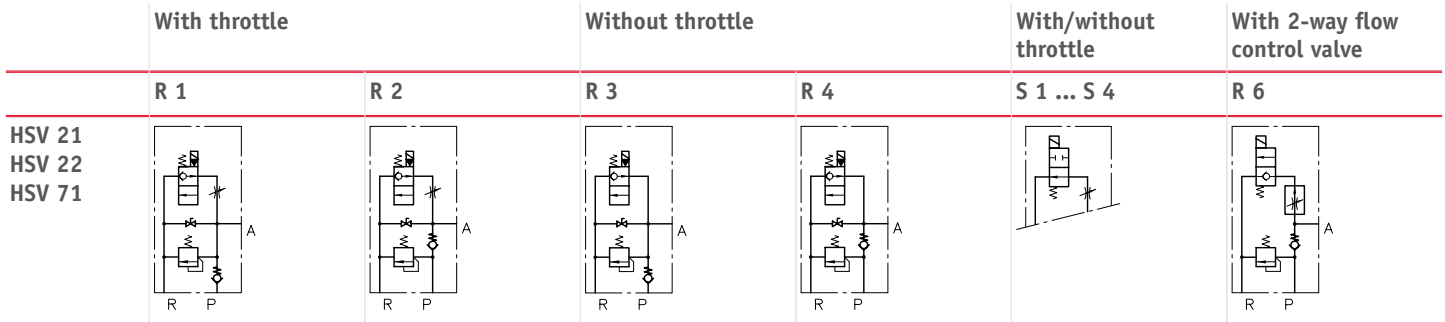


Nomen-clature:	Valve combination consisting of: <ul style="list-style-type: none">▪ 2/2-way directional seated valve, solenoid actuated▪ Pressure-limiting valve▪ Check valve optional▪ Throttle or 2-way flow control valve
Design:	Individual valve for pipe connection
Actuation:	Solenoid
p _{max} •	400 bar
Q _{max} •	120 l/min

Design and order coding example

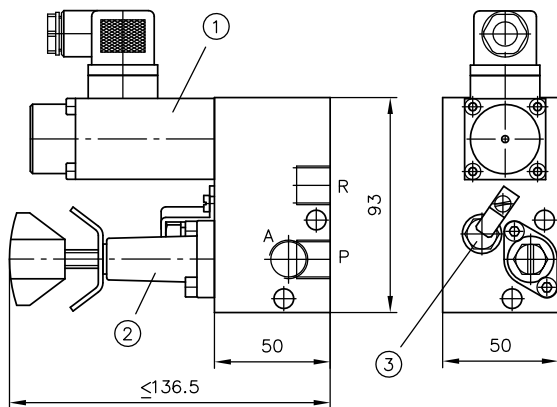
HSV 21	- R1	- R-150	- G24
			Solenoid voltage
			12 V DC, 24 V DC, 110 V AC, 230 V AC
			HSV 21 and HSV 22 also in explosion-proof version
		Pressure limiting valve	Manually adjustable or fixed, pressure setting in bar
	Function		
Basic type, size	Type HSV, sizes 2 and 7		

Function



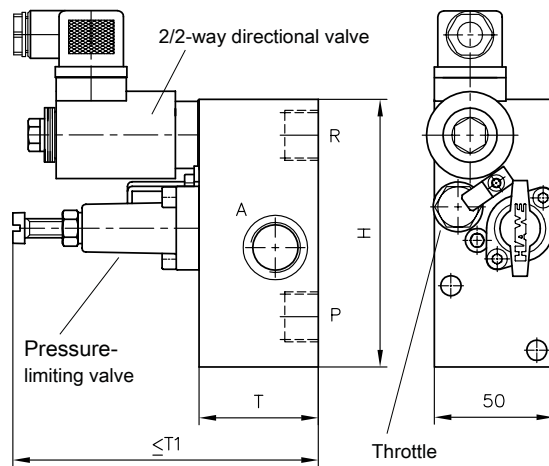
General parameters and dimensions

HSV 21; HSV 22



- 1 2/2 directional seated valve
- 2 Pressure-limiting valve
- 3 Throttle

HSV 71



- 1 2/2 directional seated valve
- 2 Pressure-limiting valve
- 3 Throttle

	Q _{max} [lpm]	p _{max} [bar]	Ports		Dimensions [mm]			m [kg]
			P	A, R	H	T	T1	
HSV 21	20	315	G 3/8	G 3/8	see illustration			2.2
HSV 22	30	315	G 3/8	G 1/2	see illustration			2.2
HSV 71	120	315	G 3/4	G 3/4	100	80	160	3.1

Associated technical data sheets:

- [Lifting/lowering valve type HSV: D 7032](#)

Similar products:

- [Connection block type HMPL and HMPV for proportional directional spool valve: D 7700 H](#)

Male connectors:

- [Line connector type MSD and others: D 7163](#)
- With economy circuit: [D 7813](#), [D 7833](#)